

MATING PART

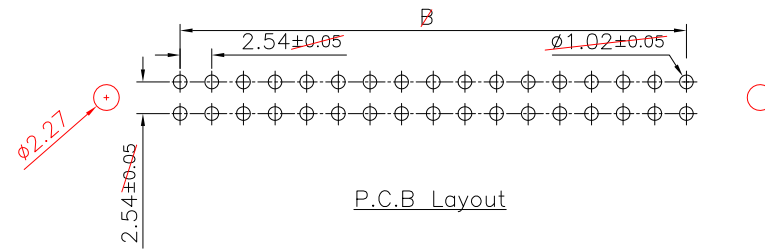
3030-XX-0101-00	3030-XX-0102-00
3030-XX-0103-00	3030-XX-0104-00

Specifications

Current Rating: 3.0A AC/DC 1A  
 Voltage Rating: 250V AC/DC  
 Contact Resistance: 20m ohm. Max  
 Insulation Resistance: 1000M ohm. Min  
 Withstanding Voltage: 600V AC For one minute 500V  
 Operating Temperature Range : -40°C to +105°C

Material:

Plastic: PBT (UL94V-0)  
 Standard Color: Black  
 Contact: Copper Alloy Brass  
 Plating: Gold Plated



Notes:  
 60P - 64P With Three Key  
 All Other Pin With One Key

Circuits	Dim					
	A	prior 20/06	B	prior 20/06	C	prior 20/06
10	32.20	32.00	10.16	10.16	-	27.94
14	37.28	37.08	15.24	15.24	-	33.02
16	39.82	39.62	17.78	17.78	-	35.56
20	44.90	44.70	22.86	22.86	-	39.70
24	49.98	49.78	27.94	27.94	-	45.72
26	52.52	52.32	30.48	30.48	-	48.26
30	57.60	57.40	35.56	35.56	-	53.34
34	62.68	62.48	40.64	40.64	-	58.42
40	70.30	70.10	48.26	48.26	-	66.04
50	83.00	82.80	60.96	60.96	-	78.74
60	95.70	95.50	73.66	73.66	-	91.44
64	100.78	100.58	78.74	78.74	-	96.72

Note: Dimension in red represents old dimension

RoHS Compliant

				DRAWN:	GENERAL TOLERANCE: .X = ±0.20 .XX = ±0.15	<h1 style="color: red; text-align: center;">CnC Tech</h1> <p style="text-align: center;">Industrial Cable and Connector Technology</p>		
				CHECKED:				UNIT: MM
					SCALE: 1:1	2.54mm Shrouded Header Without Ejector R/A Type		A4
	05-FEB-2020			APPROVAL:	SHEET: 1 / 1			
REV	DATE	FILE	BY		PROJECTION:	3010-XX-002-11-00		