

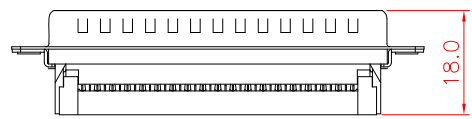
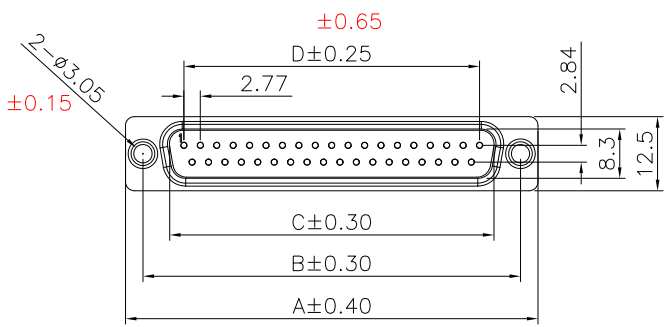
1

2

3

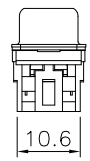
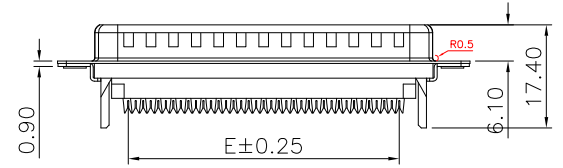
4

5

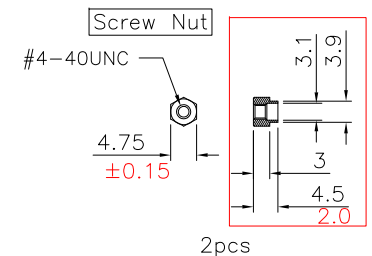
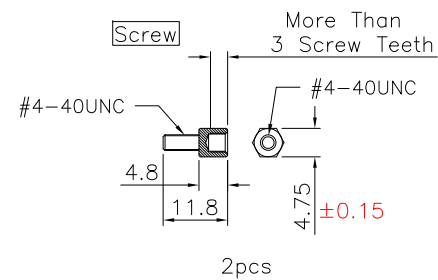
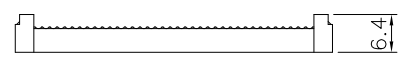
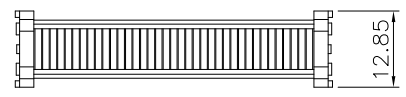


Specifications:
 Current Rating: 1A AC,DC
 Voltage Rating: 250V AC,DC
 Contact Resistance: 20m ohm.Max
 Insulation Resistance: 1000M ohm.Min
 Withstanding Voltage: 500V AC/Minute
 Operating Temperature Range: -40°C ~ +105°C

Material:
 Insulator: PBT(UL94V-0)
 Insulator Color: Black **Not mentioned**
 Contact: Brass,Gold Plated Over Nickel
 Shell:Spcc,Nickel Plated



| Circuits | Dim | | | | | | | | | |
|----------|-------|-------------|-------|-------------|-------|-------------|-------|-------------|-------|-------------|
| | A | prior 20/06 | B | prior 20/06 | C | prior 20/06 | D | prior 20/06 | E | prior 20/06 |
| 9 | 30.80 | 30.80 | 25.00 | 25.00 | 19.95 | 19.95 | 11.08 | 11.08 | 10.16 | 10.16 |
| 15 | 39.14 | 39.14 | 33.30 | 33.30 | 25.30 | 25.30 | 19.39 | 19.39 | 17.78 | 17.78 |
| 25 | 53.05 | 53.05 | 47.04 | 47.04 | 38.96 | 38.96 | 33.24 | 33.24 | 30.48 | 30.48 |
| 37 | 69.32 | 69.32 | 63.50 | 63.50 | 55.42 | 55.42 | 49.86 | 49.86 | 45.72 | 45.72 |



Note: Dimension in red represents old dimension

RoHS Compliant

| | | | | | | | | |
|-----|-------------|------|----|-----------|---|--|--|--|
| | | | | DRAWN: | GENERAL TOLERANCE: .X=±0.30 ±0.20 .XX=±0.20 ±0.15 | <h1 style="color: red; text-align: center;">CnC Tech</h1> <p style="text-align: center;">Industrial Cable and Connector Technology</p> | | |
| | | | | CHECKED: | UNIT: MM SCALE: 1:1 | | | DESCRIPTION: D-SUB IDC MALE FLAT CABLE CONNECTOR |
| | 05-FEB-2020 | | | APPROVAL: | SHEET: 1 / 1 | PART NO: 400M0-XX-1-00 | | |
| REV | DATE | FILE | BY | | PROJECTION: | | | |