

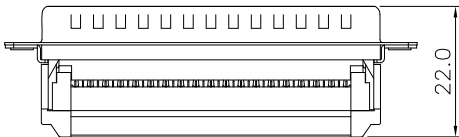
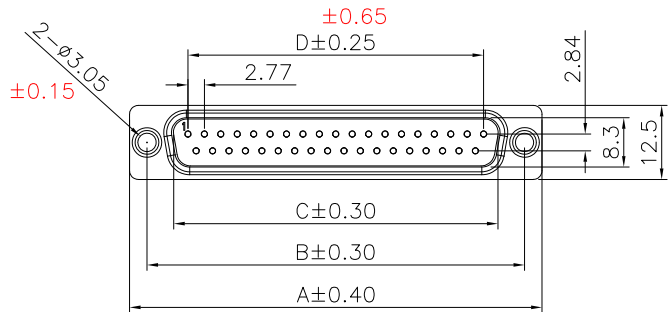
1

2

3

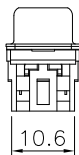
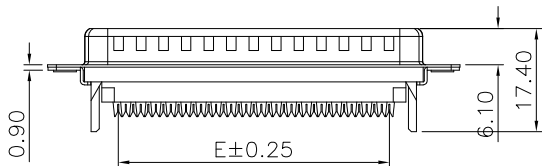
4

5

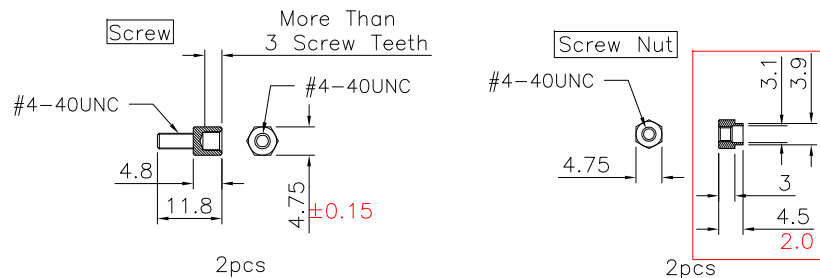
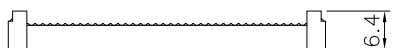
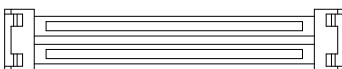
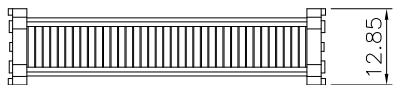


Specifications:  
 Current Rating: 1A AC,DC  
 Voltage Rating: 250V AC,DC  
 Contact Resistance: 20m ohm.Max  
 Insulation Resistance: 1000M ohm.Min  
 Withstanding Voltage: 500V AC/Minute  
 Operating Temperature Range: -40°C ~ +105°C

Material:  
 Insulator: PBT(UL94V-0)  
 Insulator Color: Black **Not mentioned**  
 Contact: Brass, Gold Plated Over Nickel  
 Shell: Spcc, Nickel Plated



Circuits	Dim									
	A	prior 20/06	B	prior 20/06	C	prior 20/06	D	prior 20/06	E	prior 20/06
9	30.80	30.80	25.00	25.00	19.95	19.95	11.08	11.08	10.16	10.16
15	39.14	39.14	33.30	33.30	25.30	25.30	19.39	19.39	17.78	17.78
25	53.05	53.05	47.04	47.04	38.96	38.96	33.24	33.24	30.48	30.48
37	69.32	69.32	63.50	63.50	55.42	55.42	49.86	49.86	45.72	45.72



Note: Dimension in red represents old dimension

RoHS Compliant

				DRAWN:	GENERAL TOLERANCE: .X=±0.30 <b>±0.20</b> .XX=±0.20 <b>±0.15</b>	<h1 style="color: red; text-align: center;">CnC Tech</h1> <p style="text-align: center;">Industrial Cable and Connector Technology</p>		
				CHECKED:	UNIT: MM SCALE: 1:1			DESCRIPTION: <b>D-SUB IDC MALE FLAT CABLE CONNECTOR</b>
	05-FEB-2020			APPROVAL:	SHEET: 1 / 1	PART NO:	A4	
REV	DATE	FILE	BY	PROJECTION:		400M0-XX-1-004S		