

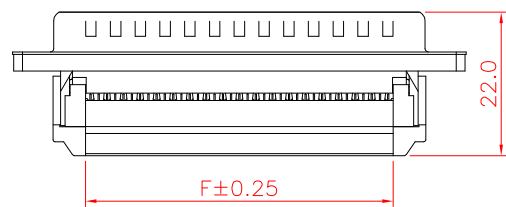
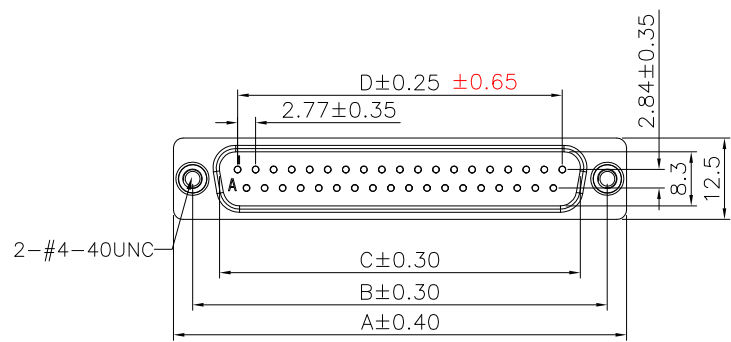
1

2

3

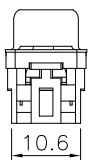
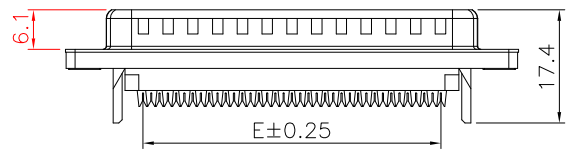
4

5

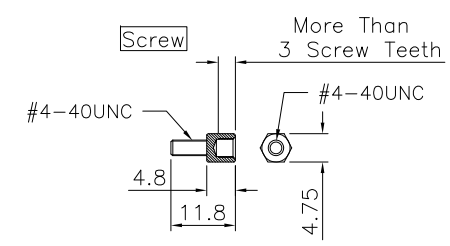
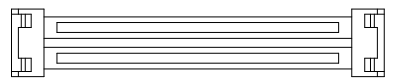
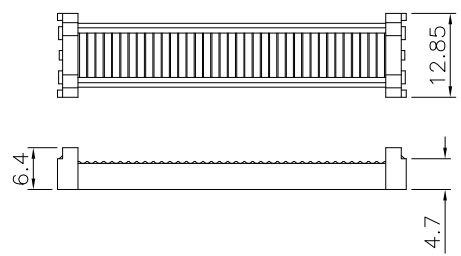


Specifications:
 Current Rating: 1A AC,DC
 Voltage Rating: 250V AC,DC
 Contact Resistance: 20m ohm.Max **20M**
 Insulation Resistance: 1000M ohm.Min
 Withstanding Voltage: 500V AC/Minute
 Operating Temperature Range: $-40^{\circ}\text{C} \sim +105^{\circ}\text{C}$

Material:
 Insulator: PBT(UL94V-0)
 Insulator Color:Black
 Contact: Brass,Gold Plated Over Nickel
 Shell:Spcc,Nickel Plated **or Tin Plated**



Number of Contacts	Dim											
	A	prior 20/06	B	prior 20/06	C	prior 20/06	D	prior 20/06	E	prior 20/06	F	prior 20/06
9	30.80	30.80	25.00	25.00	16.95	16.95	11.08	11.08	10.16	10.16	-	11.68
15	39.14	39.14	33.30	33.30	25.30	25.30	19.39	19.39	17.78	17.78	-	19.30
25	53.05	53.05	47.04	47.04	38.96	38.96	33.24	33.24	30.48	30.48	-	32.00
37	69.32	69.32	63.50	63.50	55.42	55.42	49.86	49.86	45.72	45.72	-	47.24



Note: Dimension in red represents old dimension

RoHS Compliant

				DRAWN: JAMIE	GENERAL TOLERANCE: .X \pm 0.30 .XX \pm 0.20 \pm 0.25	<h1 style="color: red;">CnC Tech</h1> Industrial Cable and Connector Technology		
				CHECKED: JERRY	UNIT: MM SCALE: 1:1			DESCRIPTION: D-SUB IDC MALE FLAT CABLE CONNECTOR
	05-FEB-2020			APPROVAL: RORY	SHEET: 1 / 1	PART NO: 410M0-XX-1-004S		
REV	DATE	FILE	BY		PROJECTION:			